

A200 抑制电导检测溴酸盐

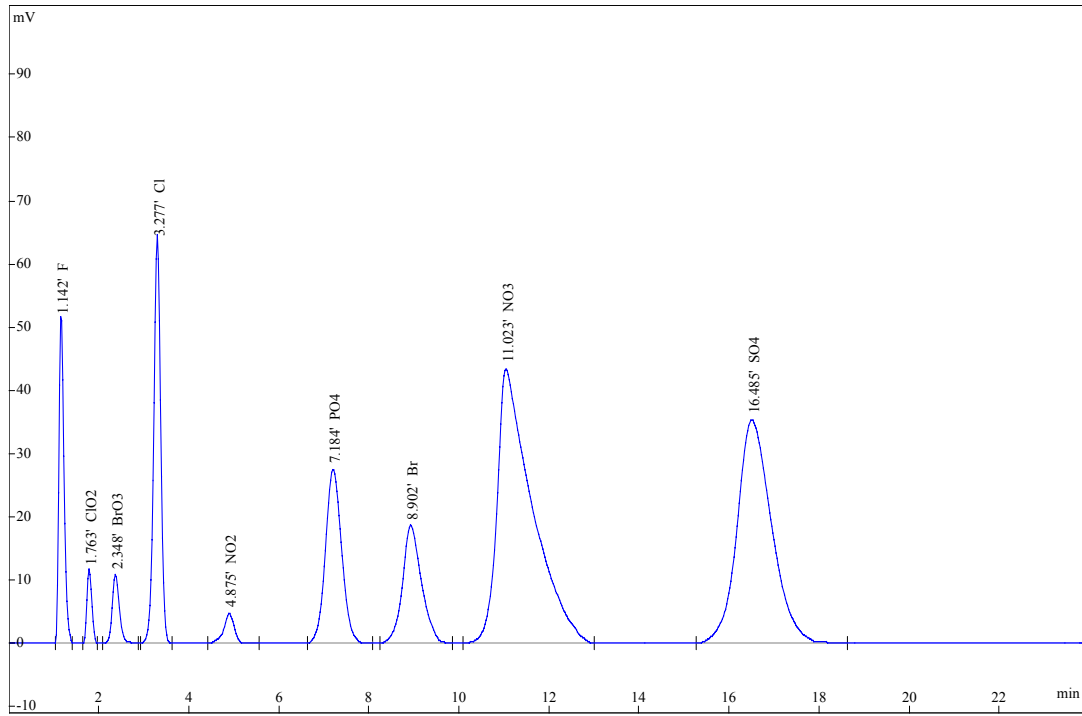
D:\A200-IC\IC\Bromat\070119\2-2 100ul w-20070119-002r2(00001, 11;50;58).hw

Detection: CD with suppressor

Eluent: 3mmol/l Na₂CO₃- 3 mmol/l NaHCO₃, F:1ml/min + W:0.5ml/min

Sample: Standard Inj. 200ul

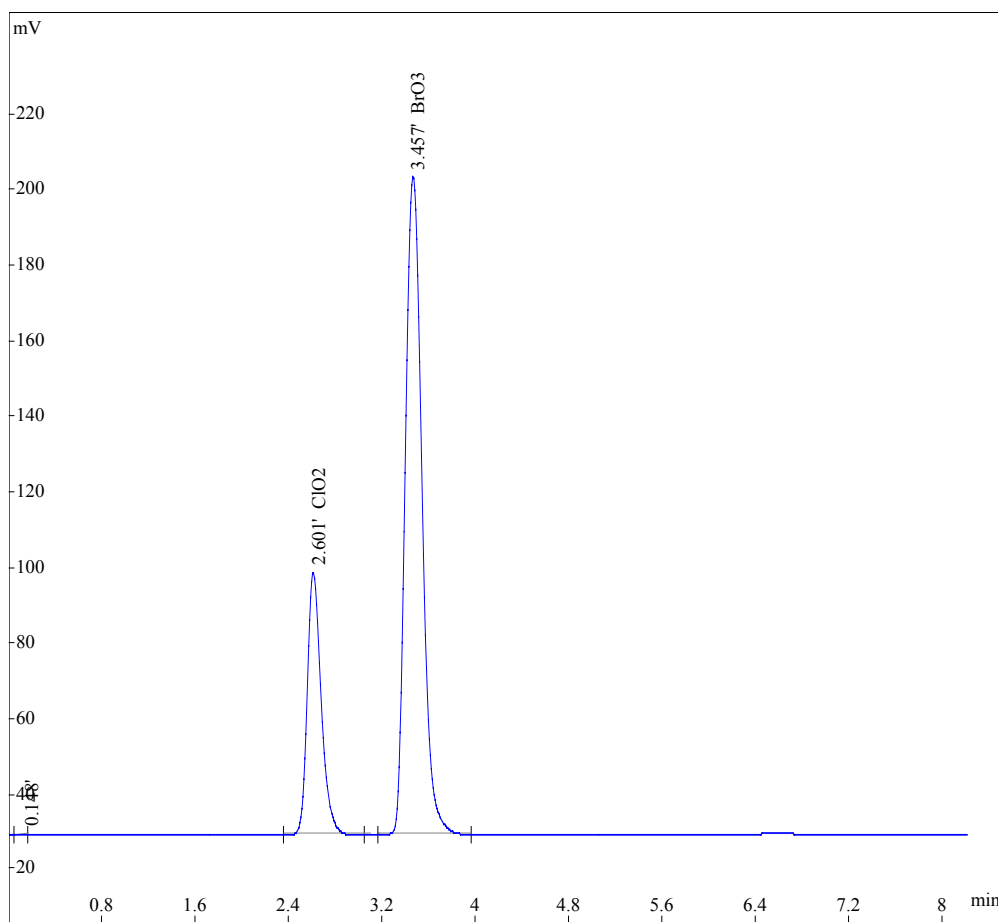
Baseline Noise: 100 uV



序号	保留时间	名称	浓度	校正因子	峰面积	峰高	峰分离度
1	1.142	F	1.0000	2.42579e-006	412237	53157	3.03
2	1.763	ClO2	10.0000	0.00011008	90843	11836	2.35
3	2.348	BrO3	10.0000	8.18488e-005	122177	11068	3.22
4	3.277	Cl	2.0000	2.88786e-006	692554	64822	4.39
5	4.875	NO2	1.0000	1.26399e-005	79115	4736	4.16
6	7.184	PO4	10.0000	1.44865e-005	690298	27554	2.37
7	8.902	Br	5.0000	9.06481e-006	551584	18720	1.91
8	11.023	NO3	10.0000	4.25704e-006	2349053	43501	3.82
9	16.485	SO4	10.0000	5.2722e-006	1896740	35359	0.00
总计			59.0000		6884601	270753	

A200 柱后衍生可见光光度检测溴酸盐

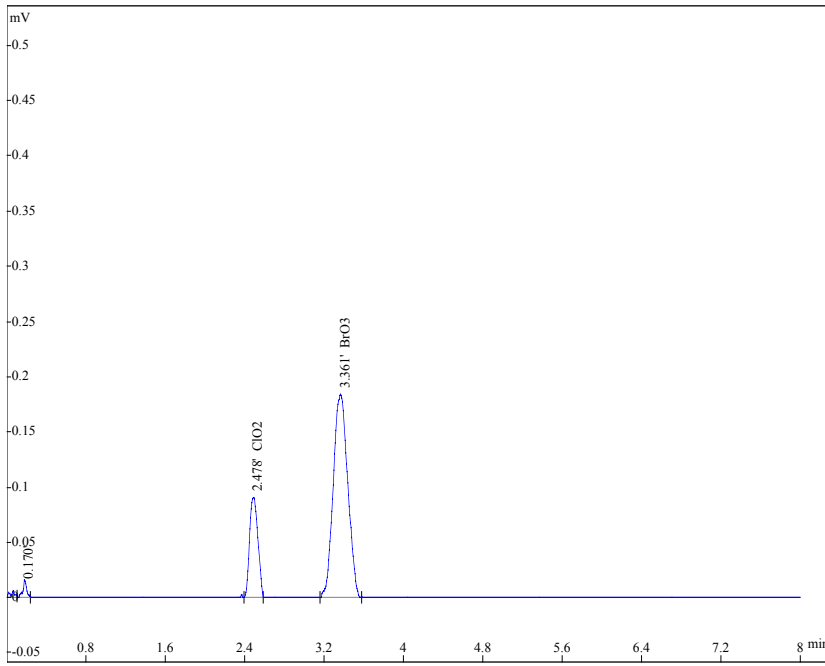
D:\A200-IC\IC\Bromat\UV-Vis\070119\2-2 0.01AUFs
 100ul-20070119-001(00001, 16;54;15).hw
 Eluent: 2mmol/l Na₂CO₃-2mmol/l NaHCO₃,
 F:1ml/min
 w:0.5ml/min
 Baseline Noise: 10 uV
 Drift: 86 uV
 Bromat Detection Limit = 2 x Noise x C(ug/l) / Peak Hight



序号	保留时间	名称	浓度mg/l	校正因子	峰面积	峰高	Detection Limit
1	2.601	ClO2	5.0000	8.63773e-006	578856	69555	1.4 ug/l
2	3.457	BrO3	5.0000	2.92629e-006	1708647	173780	0.57 ug/l
总计			10.0000		2287503	243335	

A200-某品牌小麦粉中溴酸盐的测定

D:\A200-IC\IC\Bromat\UV-Vis\070119\2-2 0.01AUFS 200ul
 no2-20070119-001(00001,18;5;01).hw
 Column: Anion column 100x4.6mm
 Sample: 10.2g 小麦面粉/100ml, treatment: see GB/T 20188-2006 inj. 200ul
 Eluent: 2mmol/l Na₂CO₃ - 2mmol/l NaHCO₃, F:1ml/min + W:0.5ml/min
Result = 0.0045ug/ml x 100ml / 10.2 g = 0.04 ug/g = 0.04 mg/kg



序号	保留时间	名称	浓度 ppm	校正因子	峰面积	峰高	峰分离度
1	2.478	ClO ₂	0.0032	5.9133e-006	544	91	4.08
2	3.361	BrO ₃	0.0045	2.38929e-006	1885	183	0.00
总计			0.0077		2429	274	

A200-某品牌小麦粉中溴酸盐的测定

Column: Anion column 100x4.6mm

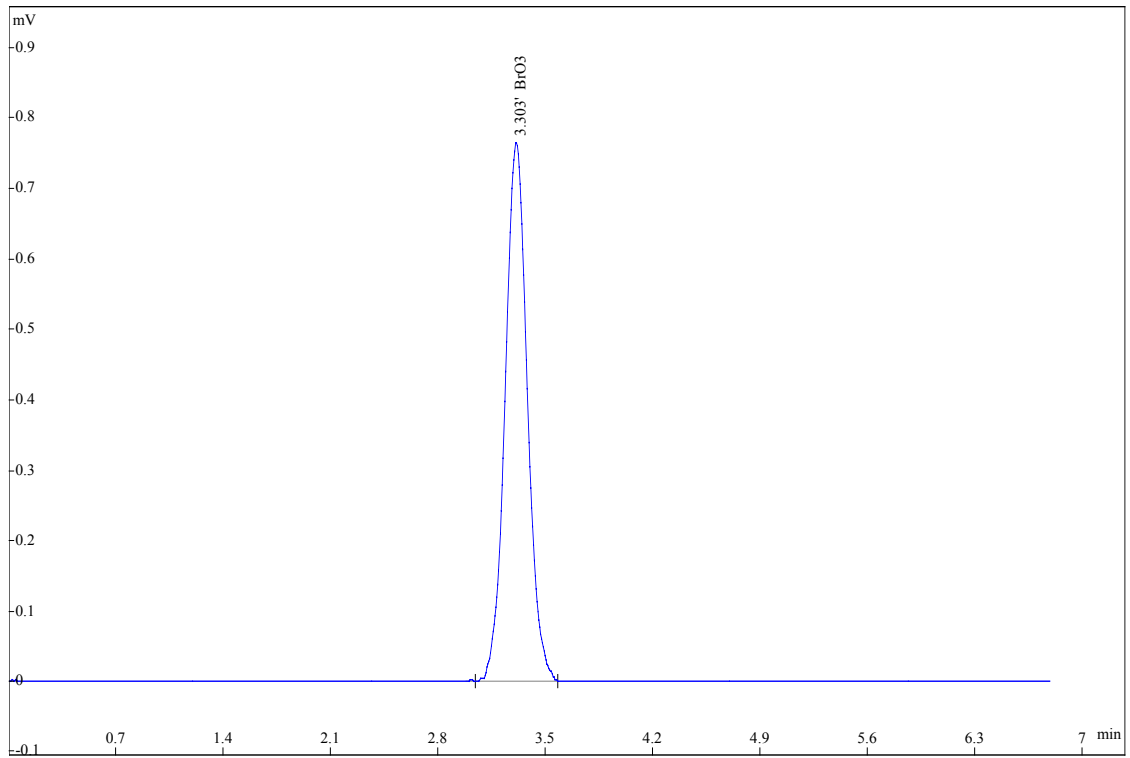
Sample: 10.9 g 小麦面粉/100ml, treatment: see GB/T 20188-2006 inj. 200ul

Eluent: 2mmol/l Na₂CO₃ - 2mmol/l NaHCO₃,

F:1ml/min

W:0.5ml/min

Result = 0.0185ug/ml x 100ml / 10.9 g = 0.17 ug/g = 0.17 mg/kg



序号	保留时间	名称	浓度 ug/ml	校正因子	峰面积	峰高	峰分离度
1	2.574	ClO ₂	0.0000	5.9133e-006	0	0	
2	3.303	BrO ₃	0.0185	2.38929e-006	7763	765	0.00
总计			0.0185		7763	765	